

# Workflow Automation

Drive business efficiency and automate everything from your simplest to most complex processes without coding. Workflow Automation for the Nintex Automation CE platform allows you to create and integrate workflows that empower your teams, delight your customers, and save you valuable time and resources.

## Why Workflow Automation

Your business is only as efficient as the processes that run it.

Is your organization mired in broken, manual processes?

Left unautomated, business-critical processes can result in high labor costs, low productivity, inefficiency, data errors, customer response delays, inability to scale, and reduced competitiveness.

Whether you need to digitize a form, streamline approvals, connect across systems, or automate a complex, long-running, non-linear process, you need one workflow tool that does it all – without depending on IT for custom coding.

With Nintex Workflow, part of the Nintex Automation CE platform, you get everything you need to connect and automate your most complex business processes – without the hassle.

### Design with ease

Create and deploy sophisticated forms and workflows in no time using our drag-and-drop and AI-powered tools. Nintex helps you turn your ideas into live workflows in just days.

### Connect it all

Seamlessly integrate your data, apps, and workflows with prebuilt and AI-powered connectors. Nintex lets you connect automations across systems and channels, so all your critical business pieces move in sync.

### Automate everything

Nintex has your organization covered, end to end and front to back. Create digital forms, automate workflows and tasks, build dashboards and portals, and generate documents (plus route them for signing and approval) so your team gets more done, faster.

Automate and orchestrate all your business processes for lower costs, faster operations, and happier customers and employees.

## Business Benefits\*

**100s**

of hours of admin work  
freed up per year

**\$1,000s**

saved in review and  
approval costs

**30%**

faster onboarding  
completions

**Hours**

to create forms and  
workflows, not days  
or weeks

**3x**

increase in employee  
productivity

**200% ROI**

over 3 years and typical  
9-month payback period

“

It used to take days to create workflows ... now it takes hours.

**Fahem Al Nuaimi**  
CEO at Khalifa University

“

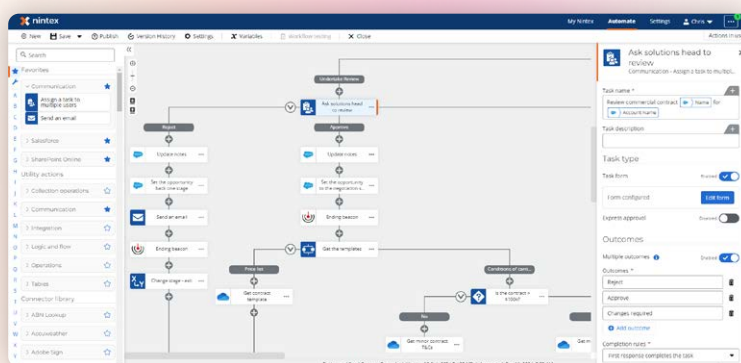
We have other tools; We're a big Microsoft shop. But I know I can do it simpler and easier, and get it done faster, with Nintex.

**Tye Eyden**  
Collaboration Business Systems Analyst, New Belgium Brewing

## Capabilities

### Forms and Mobile

Use AI to rapidly create dynamic online forms to capture and submit data from wherever you or your customers are. Our AI-powered forms assistant combined with our user-friendly design canvas, drag-and-drop controls, and advanced business logic make it easy to create and customize your forms for every business need.



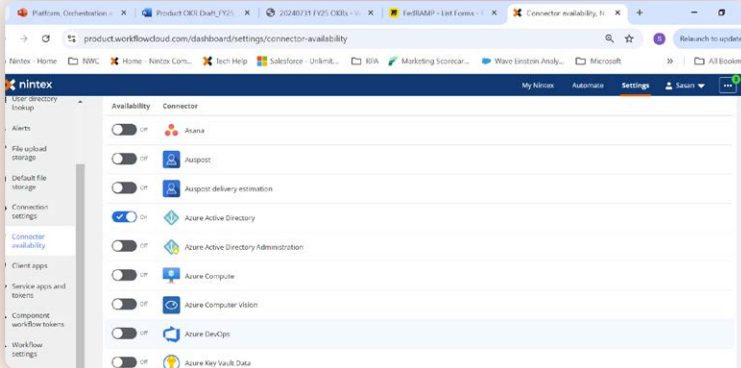
### Workflow

Easily create simple to complex processes (and everything in between) fast, using our intuitive drag-and-drop designer or our AI assistant. Even intricate business logic, state machines, and long-running workflows are a breeze. Then centrally manage those processes with ease. Discover and document them. Automate them. Decide who can modify them, which versions to deploy, and where.

Policy Number	Customer Name	Anniversary Date	Premium	Created By	Created Date	Modified By	Modified Date
AK485-77	Lesters Hotel	30 Apr 2024 - 12:00 AM	14470.00	Chris Ben	25 Jan 2024 - 10:23 AM	Workflow	30 Jan 2024 - 9:42 AM
DA-885-72	Harvats Cafe	14 May 2024 - 12:00 AM	12110.00	Chris Ben	25 Jan 2024 - 10:24 AM	Workflow	30 Jan 2024 - 3:45 PM
DO-272-82	The Warehouse	22 Apr 2024 - 12:00 AM	5320.00	Chris Ben	25 Jan 2024 - 10:25 AM	Chris Ben	25 Jan 2024 - 10:25 AM
AD-208-12	Ernsborough High School	31 May 2024 - 12:00 AM	9870.00	Chris Ben	25 Jan 2024 - 10:26 AM	Chris Ben	25 Jan 2024 - 10:26 AM
25-457-37	Ernsborough Police Station	26 Apr 2024 - 12:00 AM	4200.00	Chris Ben	25 Jan 2024 - 10:27 AM	Chris Ben	25 Jan 2024 - 10:27 AM

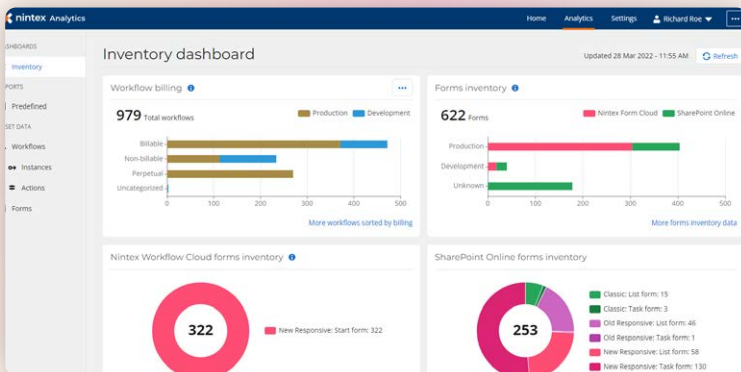
## Data Tables

Utilize a native, centralized repository for storing, managing, and connecting process-related data efficiently. Deliver solutions more quickly by consolidating workflow-related data. Ensure the data needed for smooth workflows and critical decisions is available when you need it.



## Connectors and Xtensions®

Get your systems talking and extend their value by integrating them into the workflows that run your business. Run your processes wherever it makes sense — in the cloud, on-premises, or both. With our all-inclusive, ready-to-use connectors and the AI-powered Xtensions framework to build your own, you can update Salesforce, sync SharePoint, and message in Teams — all in a single workflow.



## Insights

Explore your process-related data and discover actionable insights to optimize your processes. With Nintex, you can understand how your processes perform, measure their efficiency, identify bottlenecks, and calculate the return on your automation investment.

Join thousands of companies around the world that use Nintex



## Learn More

**At Nintex, we believe intelligent automation can remove friction from work and inspire teams to build a culture of efficiency that accelerates business success.**

For more information about Nintex Workflow Automation, visit [nintex.com](https://nintex.com)

